

ENGLISH

The logo for ACOL, featuring the letters 'A', 'C', 'O', and 'L' in a stylized, blocky font. The 'A' is a simple triangle, the 'C' is a thick horizontal bar with a vertical stem, the 'O' is a thick horizontal bar with a vertical stem, and the 'L' is a thick horizontal bar with a vertical stem.

SL USER MANUAL

This manual is printed based on ISO 4210 : 2023 regulation.

This product is tested of ISO 4210-2 : 2023 Safety requirements for bicycles(racing),

ISO 4210-6 : 2023 Frame and fork test methods(racing)

SL

Table of Contents

1. Product Introduction
2. Frame Geometry
3. Bicycle Specification
 - 3.1. Frame components
 - 3.2. Cockpit components
 - 3.3. Spacer
 - 3.4. Component Compatibility
4. Seatpost
 - 4.1. Installing Offset Seatpost
 - 4.2. Seatpost insert
 - 4.3. Di2 Battery
5. Replacing parts and accessories

1. Product Introduction

This manual contains important information on safety, performance, and inspection. It must be read and kept for reference after purchasing and beginning to ride a bicycle. This manual is specifically for the SL model from ACOL, and the “User Product Manual” should also be reviewed. If the User Manual or Product Manual is unavailable, you may download it from acol.bike.



Warning!

This symbol, accompanied by the word “WARNING,” indicates a situation that could result in death or serious injury if the instructions are not followed. Bicycle accidents often lead to serious injury or death, so please exercise caution. This warning phrase is not repeated throughout the manual.



Caution!

This symbol, combined with the word “CAUTION,” alerts you to a risk of minor or moderate injury if instructions are not followed or if a hazardous action is taken. Failure to follow instructions may result in serious damage to your bicycle or void warranty coverage.



This mark requires the application of high quality grease or threadlocker to the area.

1.1. Warranty Repair

Check the manual provided with your bike and visit www.acol.bike/warranty for the latest warranty guidelines.

1.2. Assembly

This manual does not contain information on assembly, usage, or maintenance. For assistance with these topics, please contact your local ACOL dealer.

When performing assembly or maintenance, use a repair stand. Attach the stand to the seatpost, not the frame, to avoid potential damage. If the repair stand is attached to the frame, it may cause damage to the frame.

Please note that the components described in this manual are subject to change.



Warning!

SL bicycles require proper knowledge and skills for assembly. Be sure to have the bicycle assembled and inspected by an ACOL dealer before riding.



Warning!

The components of the SL bike are manufactured specifically for SL. Be sure to use genuine components. Using non-genuine parts may lead to serious issues, including damage to the parts and accidents. SL-specific components should not be used on other bicycles, even if they appear compatible. The customer is responsible for any problems arising from the use of non-genuine or misused components.

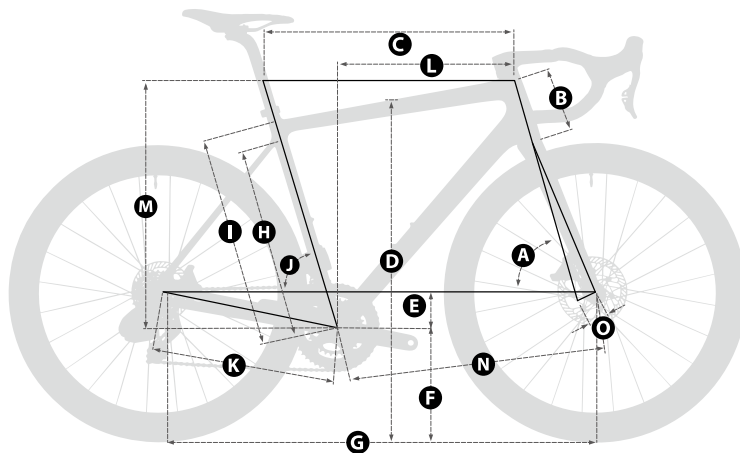


Warning!

Do not modify any part of the bicycle, including the frame. Actions such as grinding, drilling, or installing incompatible parts may cause accidents, resulting in serious injury or death.

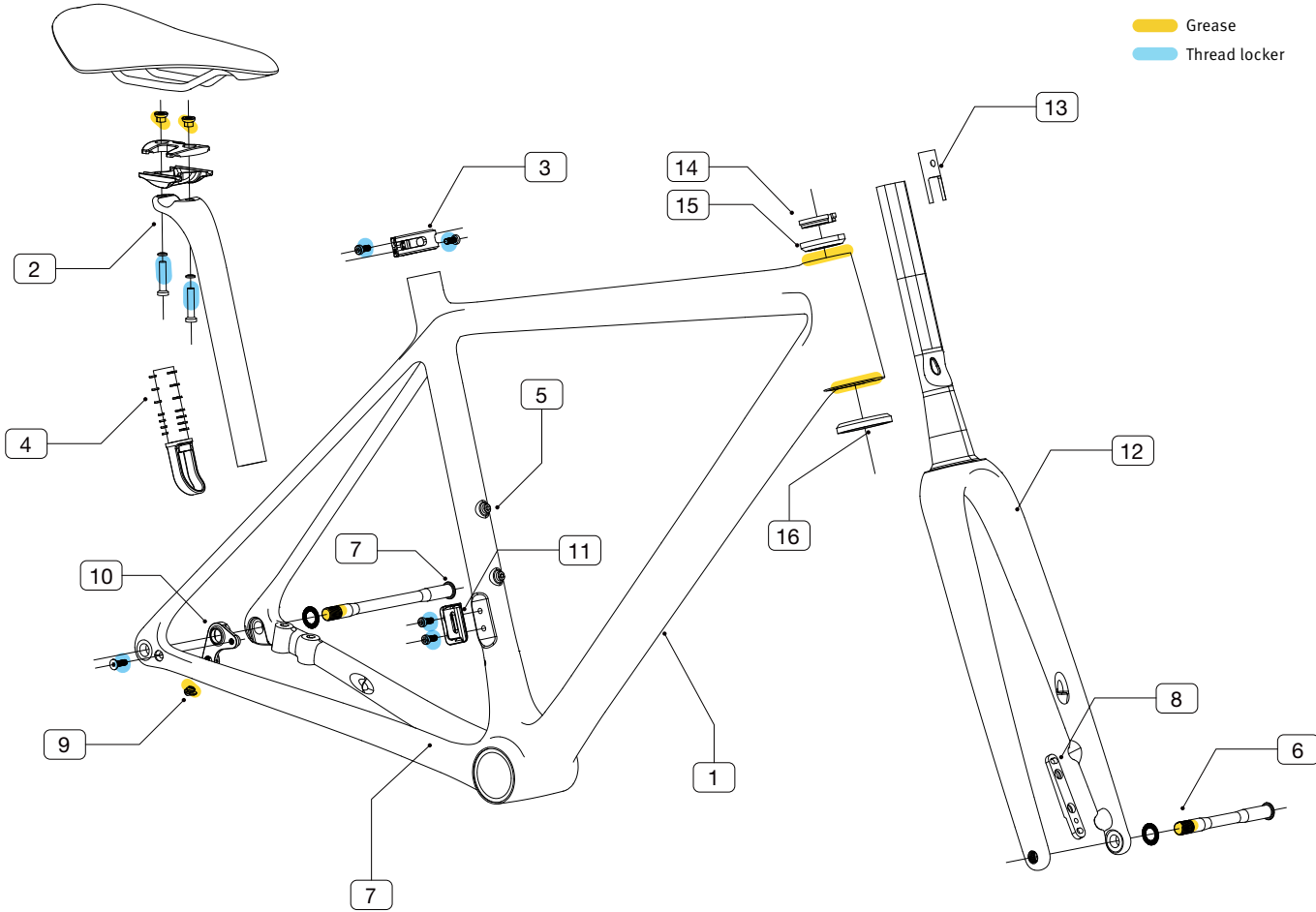
2. Frame Geometry

SL



	XS	S	M	L
A. Head tube Angle	72	72.5	73	73.5
B. Head Tube Length	110	120	135	154
C. Top Tube Length (Horizontal)	515	532	541	561
D. Stand over Height	710	730	750	770
E. Bottom Bracket Drop	-73	-73	-71	-71
F. Bottom Bracket Height	270	270	273	273
G. Wheel base	972.5	976	981	997
H. Seat Tube Length (B-B Center to Center)	396	424	443	470
I. Seat Tube Length (B-B Center to Top)	442	472	488	514
J. Seat Tube Angle	75	74	74	73.5
K. Chain Stay Length	410	410	410	410
L. Reach	376	381	385	393
M. Stack	518	530	543	765
N. Front-Center	573	577	581	587
O. Fork Offset	46	46	43	43

3. Bicycle Specification



Frame components

		TOOL SIZE	TORQUE(Nm)
1	Frame	-	-
2	Seatpost	5mm hex wrench	7Nm
		5mm hex wrench	7Nm
3	Seatpost Clamp	4mm hex wrench	6Nm
4	Di2 Battery Mount	-	-
5	Water Bottle Cage Bolts	4mm hex wrench	4Nm
6	Front Axle (12mm x 100mm)	5mm hex wrench	12Nm
7	Rear Axle (12mm x 142mm)	5mm hex wrench	12Nm
8	Fork Brake Flat Mount Adapter	-	-
9	Di2 Rear Derailleur Grommet	-	-
10	Rear Derailleur Hanger	3mm hex wrench	4Nm
11	Front Derailleur Hanger	3mm hex wrench	5Nm
12	Fork	-	-
13	Expander Plug	-	-
14	Compression Ring / C-Ring	-	-
15	Upper Headset Bearings (41.8mm OD x 30.5mm ID x 8mm X 45°)	-	-
16	Lower Headset Bearings (51.8mm OD x 40.0mm ID x 8mm X 45°)	-	-



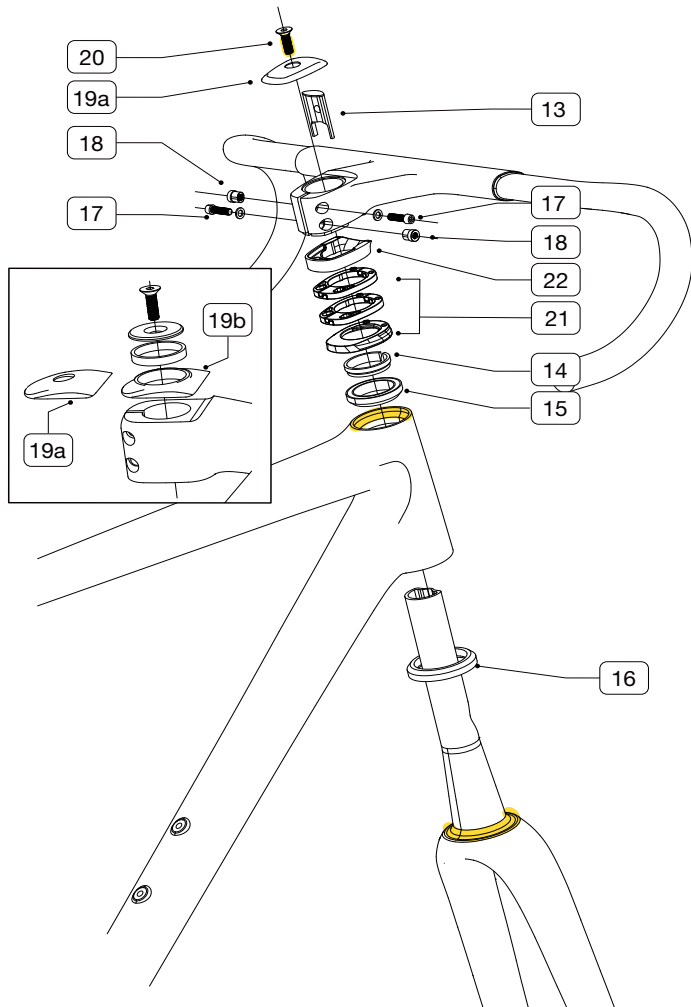
Warning!

Be sure to tighten all parts and components to the recommended torque. Overtightening can damage the shape or integrity of the hardware or components. If not tightened sufficiently, parts may come loose or detach. In both cases, there is a risk of damage to the bike and a serious accident for the rider.



Warning!

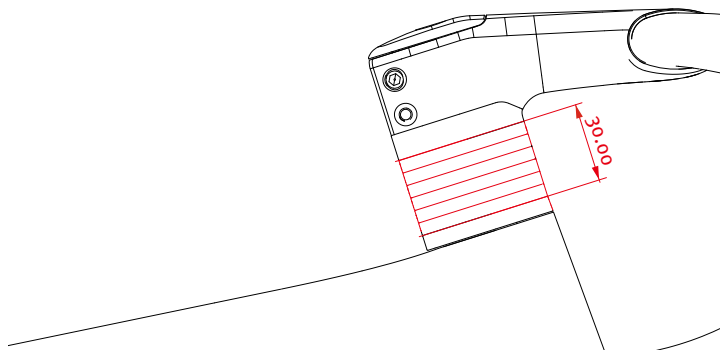
Thread locker must be applied to fasteners to prevent them from loosening. In case of reuse, the screw fixer must be cleaned and then reapplied.



Cockpit components

		TOOL SIZE	TORQUE (Nm)
17	Cockpit Steerer Clamp Bolt / Washer	4mm hex wrench	5Nm
18	Cockpit Steerer Clamp Nut	4mm hex wrench	5Nm
19	Cockpit Top Closed (a) / Open (b) Cap	-	-
20	Cockpit Top Bolt	4mm hex wrench	5Nm
21	Cockpit Headset/Spacer Kit	-	-
22	handlebar bottom cover	-	-

Spacer



Warning!



Make sure the headset spacer does not exceed 30 mm above or below the stem. If the spacer height exceeds 30 mm, the steerer tube may become damaged and break, potentially leading to a collision and causing injury.

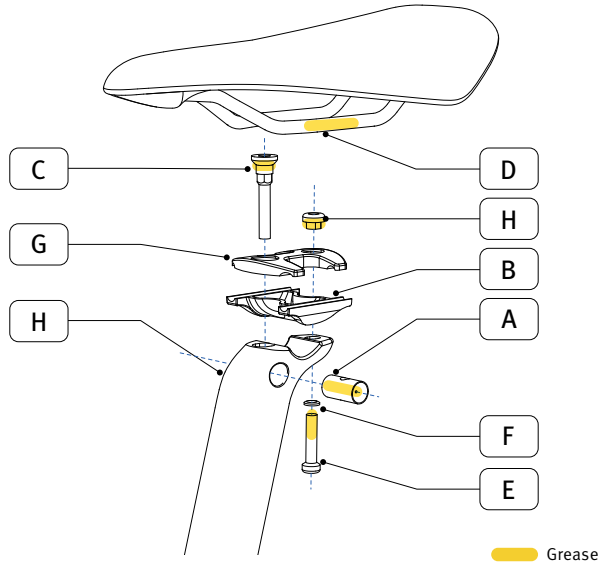
Component Compatibility

Component	Compatible Size
Upper Headset Bearing	41.8mm OD x 30.5mm ID x 8mm X 45°
Lower Headset Bearing	51.8mm OD x 40.0mm ID x 8mm X 45°
Front Thru-Axle	12 x 100
Rear Thru-Axle	12 x 142
Minimum/Maximum Chainring	34t~42t / 48t~55t
Minimum/Maximum Front Rotor	140mm / 160mm
Minimum/Maximum Rear Rotor	140mm / 160mm
Maximum Tire	700c x 32mm

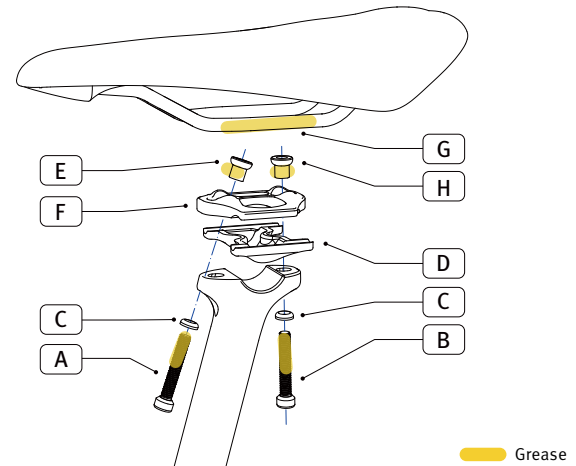
There are many types and sizes of bicycle tires. A minimum gap of 6 mm is required between the frame, fork, and tires. To select the appropriate tire, please consult an ACOL dealer or a specialty bicycle dealer for recommendations based on your riding needs.

4. Seatpost

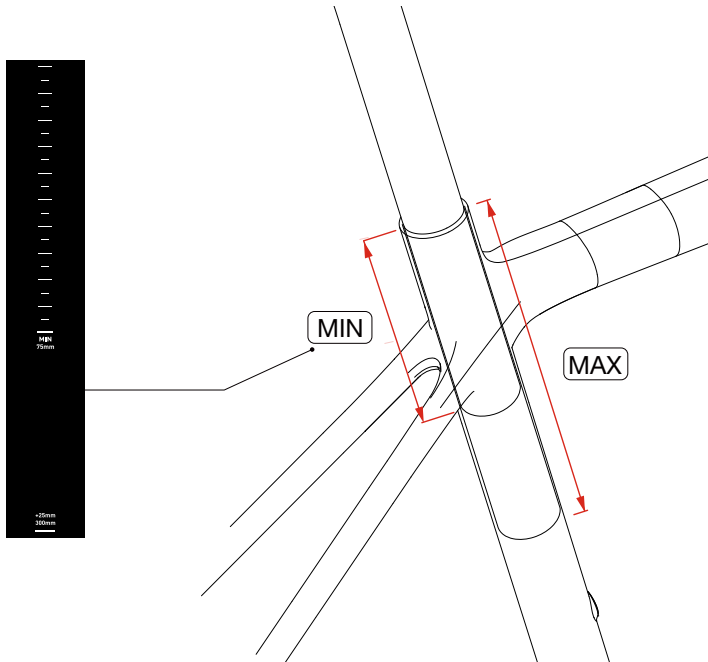
Installing a 25mm Offset Seatpost



Installing a Zero, 15mm Offset Seatpost



Seatpost insert



Minimum insertion

Seatposts require a minimum insertion depth of 75 mm. Ensure that it is inserted deeply enough so the minimum insertion mark on the seatpost is not visible.

Maximum insertion

The shape of the seat tube changes as you go down, so the maximum insertion depth specified for each frame size is different. Please refer to the table below.

Frame Size	Maximum Insertion (mm)
XS	169
S	199
M	215
L	241

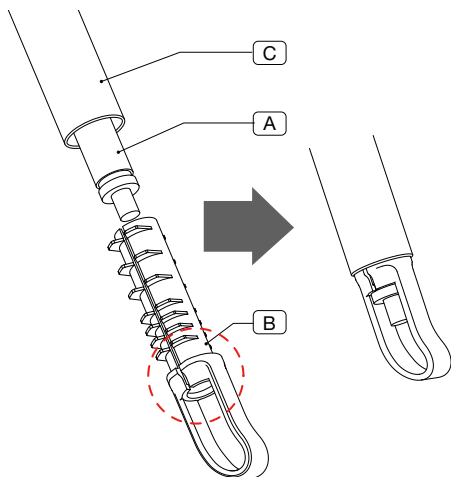


Warning!

When inserting the seatpost, ensure there is enough clearance between the bottom end of the seatpost and the frame to prevent frame damage.

If the desired seat height cannot be achieved within the minimum and maximum insertion limits, the seatpost must be replaced with one of the correct size. The seatpost should fit smoothly into the seat tube but must be tightened adequately to prevent movement. If issues arise during fastening, such as improper installation or movement of the seatpost, it should be inspected by an ACOL dealer.

Di2 Battery (Di2 Version bike)



Assembly

1. The Di2 battery (A) must be secured within the seatpost (C) using the battery mount (B). This installation must be completed before inserting the seatpost into the seat tube.
2. Align the connection point of the battery (A) downward with the marked indentation on the battery mount (B), and insert it accordingly.
3. Push the battery mount (B) fully into the end of the seatpost (C).

Decomposition

1. Carefully pull the handle at the bottom of the battery mount (B) to remove it.
2. After removing the mount, detach the battery (A).

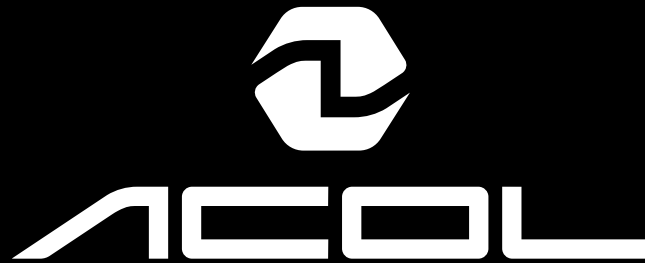
Warning!



The Di2 battery must be inserted in the correct position. If not, the cable may come loose from the seatpost, causing noise, damage, or preventing shifting adjustments.

5. Replacement Parts and Accessories

		CODE	
1	Integrated handlebar	360mm x 70mm	ABC1691WNN0286
		380mm x 70mm	ABC1691WNN0209
		400mm x 80mm	ABC1691WNN0214
		400mm x 90mm	ABC1691WNN0218
		420mm x 100mm	ABC1691WNN0223
		420mm x 110mm	ABC1691WNN0227
		440mm x 120mm	ABC1691WNN0232
2	Cockpit steerer bolt/washer	DBC50BTWNW0002 / DBC50WSWNW0003	
3	Cockpit top cap closed/open	DBC50HBR8P0003 / DBC50HBR8P0004	
4	Headset Cover	DBC50HSR100001	
5	Spacer (round)	DBC50HSR100002	
6	Seatpost (400mm, 25mm offset)	ABC1672WNN0046	
	Seatpost 400mm, 25mm offset)	ABC1672WNN0047	
7	Seatpost Bolt/Nut/Barrel Nut	DBC50BTWNW0018	
		DBC50BTWNW0019	
		DBC50BTR0100011	
		DBC50BTWNW0015	
8	Saddle rail clamp	DBC50PTWNNW0004	
9	Seatpost Clamp	DBC50SCR060001	
10	Front axle (12mmx100mm)	ABC1667DTS0005	
11	Rear axle (12mmx142mm)	ABC1667DTS0006	
12	Front derailleur hanger	DBC50SCR080001	
13	Rear derailleur hanger	DBC50RDR110001	
14	Di2 battery mount	DBC50PTR080001	
15	Bottle cage bolt	DBC50BTWNW0004	
16	Cable grommet	DBC50PTR050001	
		DBC50PTWNNW0001	
		DBC50PTR080003	
		DBC50PTWNNW0002	
17	Foam sleeve	DBC50PTWNNW0003	



acol.bike