

ENGLISH

ACOL

TXT PRO TT (HANDLEBAR)

USER MANUAL

TXT PRO TT

(HANDLEBAR)

Table of Contents

1. General Guidelines for Introduction and Assembling
2. Geometry
3. Specification
 - 3.1. TK-EXC
 - 3.2. Armrest
 - 3.3. Grip
4. Setting
 - 4.1. Basic Settings
 - 4.2. Side angle setting and armrest angle spacer setting
 - 4.3. Set the inside position
5. Detailed assembly description

1. Product Introduction

This manual provides important information about the safety, performance, and inspection of the equipment. Make sure you read it and keep it for reference before you start driving. This product manual is a manual for the equipment, and you need to read the 'Product User Manual' additionally. If you do not have a user's manual or product manual, you can download it for free from acol.bike.



Warning!

This symbol, accompanied by the word "WARNING," indicates a situation that could result in death or serious injury if the instructions are not followed. Bicycle accidents often lead to serious injury or death, so please exercise caution. This warning phrase is not repeated throughout the manual.



Caution!

This symbol, combined with the word "CAUTION," alerts you to a risk of minor or moderate injury if instructions are not followed or if a hazardous action is taken. Failure to follow instructions may result in serious damage to your bicycle or void warranty coverage.



This mark requires the application of high quality grease or threadlocker to the area.

1.1. Warranty Repair

Visit the accompanying bicycle manual and www.acol.bike/warranty for the latest version of the warranty.

1.2. Assembly

This manual is not a complete assembly, use, maintenance or maintenance manual; please contact our official ACOL authorized agency for all services, assembly, maintenance and maintenance.

- The components written in this manual are up to date and subject to change as of the date the manual was created.
- Please observe the torque prescribed when assembling.
- Do not use this product for purposes other than the categories shown in the package (e.g., Tracking, Cyclo-cross, MTB, Downhill, Free Ride, BMX).
- Be careful of sharp edges when assembling or adjusting.
- Regular checks are required to ensure that the bolts are tightened as specified.



Warning!

TXT PRO TT bicycles require proper knowledge and skills for assembly. Be sure to have the bicycle assembled and inspected by an ACOL dealer before riding.



Warning!

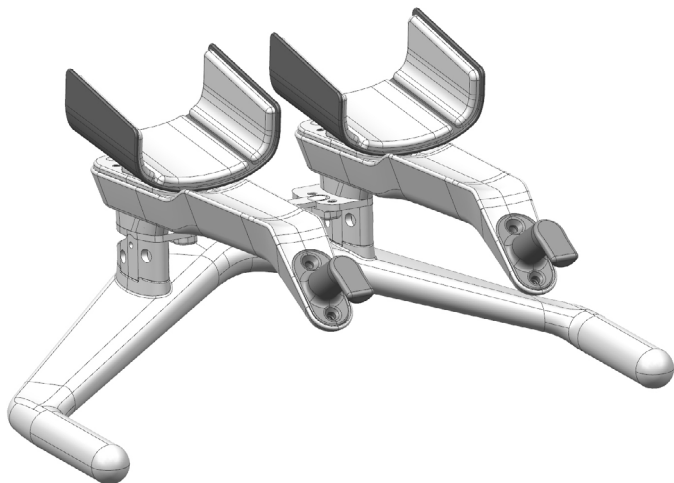
The components of the TXT-PRO TT are manufactured for TXT-PRO TT. Be sure to use genuine components. Using non-genuine parts may lead to serious issues, including damage to the parts and accidents. TXT-PRO TT specific components should not be used on other bicycles, even if they appear compatible. The customer is responsible for any problems arising from the use of non-genuine or misused components.



Warning!

Do not modify any part of the bicycle, including the frame. Actions such as grinding, drilling, or installing incompatible parts may cause accidents, resulting in serious injury or death.

2. Geometry

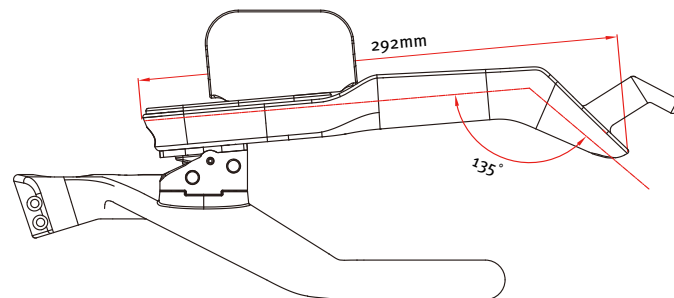
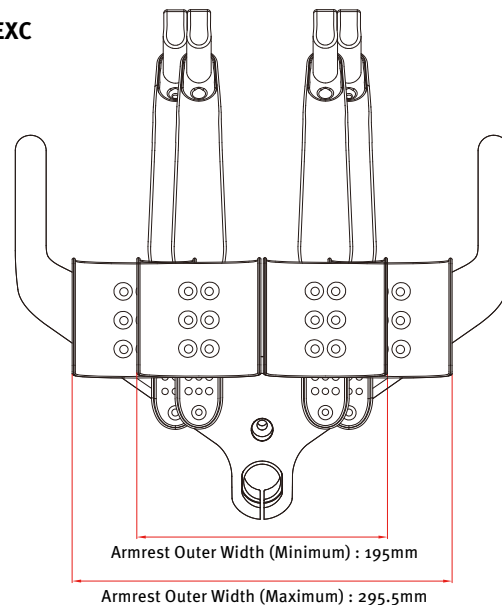


TXT PRO TT (HANDLEBAR)

Width	292mm
Angle	135°
Basebar Width	360mm
Adjustable range of front/rear parts of extension bar	20mm (rail type)
Center pad width	98, 135mm (slot type)
Upper and lower adjustable degree range	5°~25° (2-bolt type)
Left and right adjustable angle range	0°~8°
Grip Drop	53mm
Size	One size
Type	AERO
Finish	Matt black
Grip types	4 different types

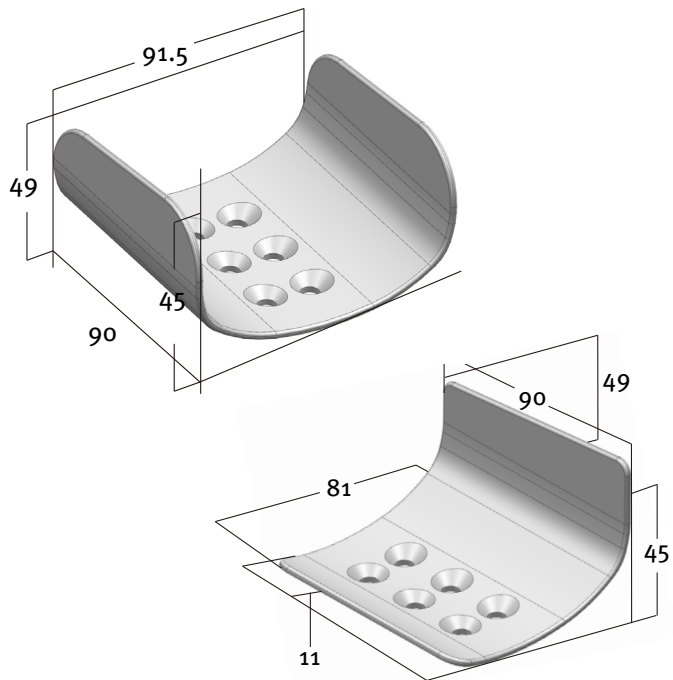
3. Specification

3.1 TK-EXC



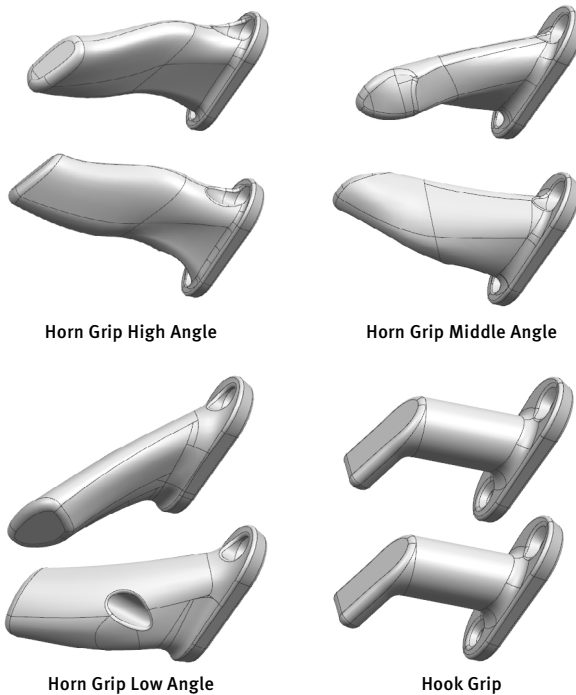
3. SPECIFICATION

3.2 Armrest



PARTS	CODE	QTY
ARMREST-HIGH VERSION		2
ARMREST-ONE SIDE HIGH VERSION		2

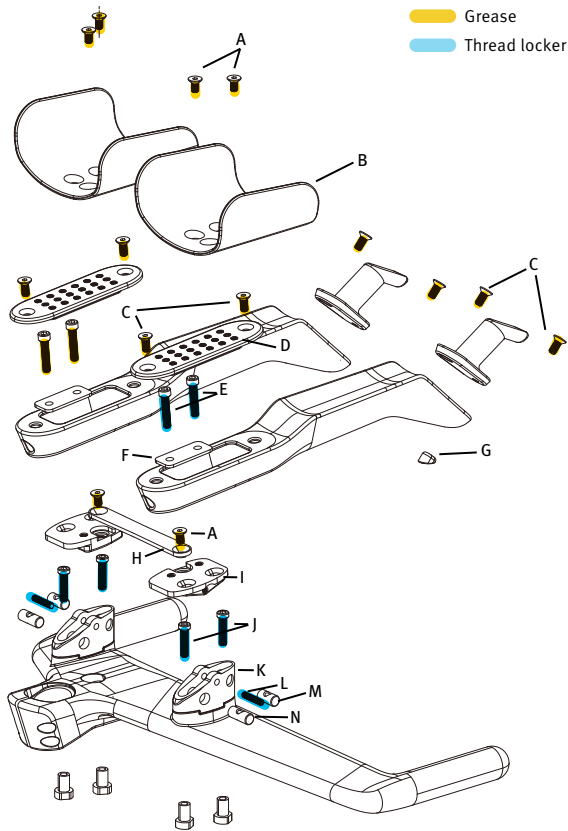
3.3 GRIP



PARTS	CODE	QTY
Horn Grip High Angle (L-R)		1set
Horn Grip Middle Angle (L-R)		1set
Horn Grip Low Angle (L-R)		1set
Hook Grip		2

4. SETTING

4.1 Basic Setting



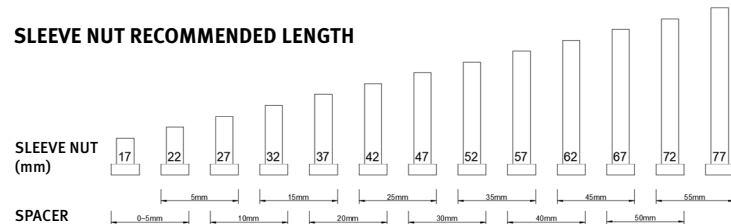
	PARTS	CODE	Q'TY
A	M5*10mm HEAD CAP SCREW		6
B	ARMREST-HIGH VERSION		2
C	M5*12mm HEAD CAP SCREW		8
D	EXTENSIONBAR COVER PLATE		2
E	M5*25mm HEX WRENCH SCREW		4
F	INNER FIXING PLATE		2
G	EXTENSIONBAR END FIXING NUT		2
H	ANGLE SPACER BRIDGE		1
I	ANGLE SPACER COVER SET(LEFT,RIGHT)		1set
J	M5*20mm TAPPERED SCREW		4
K	ANGLE SPACER		2
L	M4*20mm SET SCREW		2
M	15mm BARREL NUT		2
N	20mm BARREL NUT		2

When assembling, be cautious, as the length of the sleeve nuts varies depending on the height of the spacer.

*Front and rear adjustable: 20 mm

*Up and down adjustable: 5°-25°

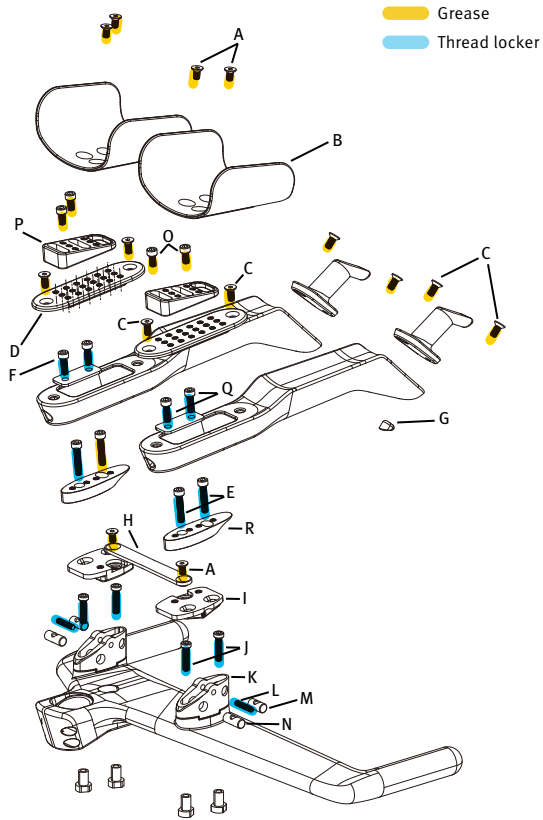
SLEEVE NUT RECOMMENDED LENGTH



Please use a Sleeve Nut for the rear that is 5mm lower than the one for the front.

4. SETTING

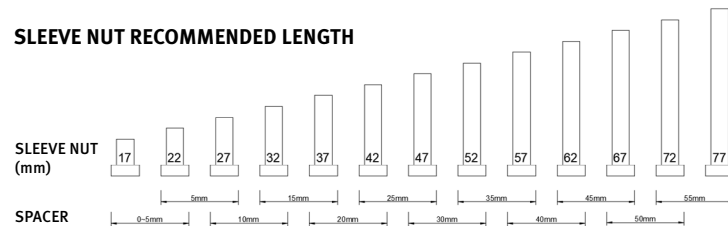
4.2 Side Angle And Armrest Angle Spacers Setting



	PARTS	CODE	Q'TY
A	M5*10mm HEAD CAP SCREW		6
B	ARMREST-HIGH VERSION		2
C	M5*12mm HEAD CAP SCREW		8
D	EXTENSIONBAR COVER PLATE		2
E	M5*25mm HEX WRENCH SCREW		4
F	INNER FIXING PLATE		2
G	EXTENSIONBAR END FIXING NUT		2
H	ANGLE SPACER BRIDGE		1
I	ANGLE SPACER COVER SET(LEFT,RIGHT)		1set
J	M5*20mm TAPPED SCREW		4
K	M4*20mm SET SCREW		2
L	15mm BARREL NUT		2
M	20mm BARREL NUT		2
N	Seatpost Bolt/Nut/Barrel Nut		2
O	M5*10mm HEX WRENCH SCREW		4
P	ARMREST ANGLE SPACER		2
Q	M5*15mm HEX WRENCH SCREW		4
R	LEFT/RIGHT ANGLE ADJUSTABLE SPACER		1set

When assembling, be cautious, as the length of the sleeve nuts varies depending on the height of the spacer.

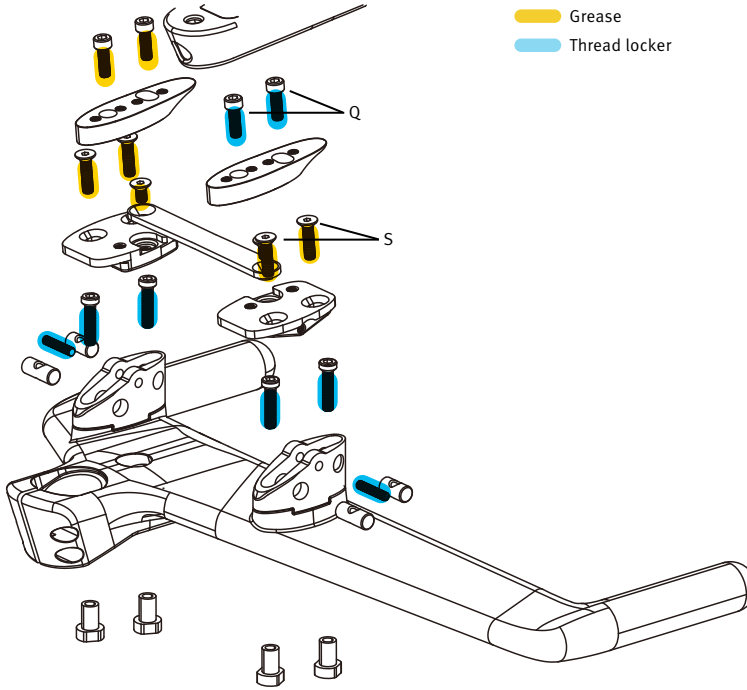
SLEEVE NUT RECOMMENDED LENGTH



Please use a Sleeve Nut for the rear that is 5mm lower than the one for the front.

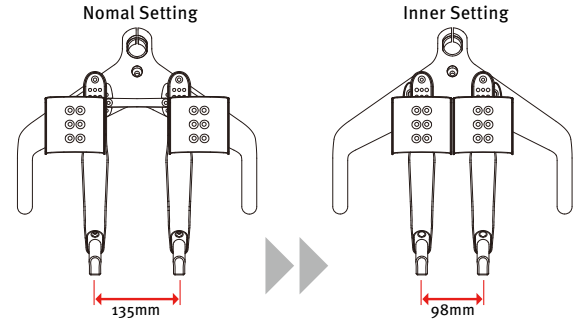
4. SETTING

4.3 Inner Position Setting



- Grease
- Thread locker

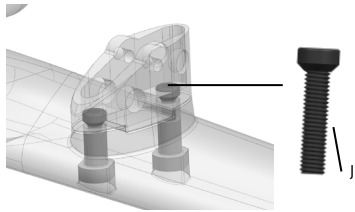
CENTER SECTION DISTANCE



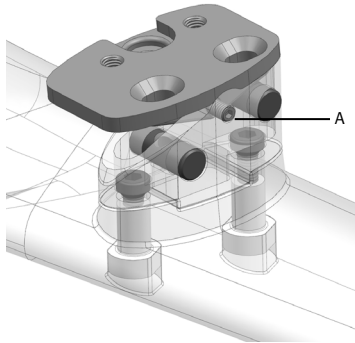
	PARTS	CODE	Q'TY
Q	M5*15mm HEX WRENCH SCREW		4
S	M5*20mm HEAD CAP SCREW		4

5. DETAILED ASSEMBLY DESCRIPTION

5.1 How to installation of angle spacer



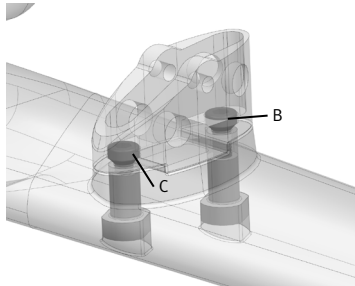
1. Use the sleeve nut and the M5*20mm tapered bolt (Part: J) to attach the angle spacer (Part: K) to the base bar. (Using other bolts may prevent angle adjustment due to bolt interference.)



2. Raise the angle spacer cover (Part: I) to align with the shape of the angle spacer.
3. Use the M4*20mm set screw (Part: L) to secure the two components.
4. Install the 15mm barrel nut (Part: M) at the front of the angle spacer.
5. Install the 20mm barrel nut (Part: N) at the rear of the angle spacer.

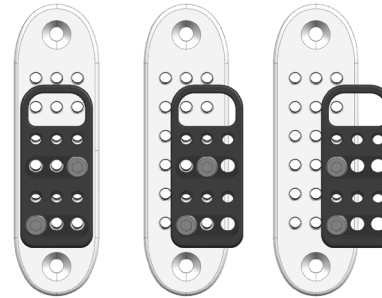
Caution!

When securing the M4*20mm set screw (Part: L), apply Loctite Blue 243 to ensure proper operation of the product.



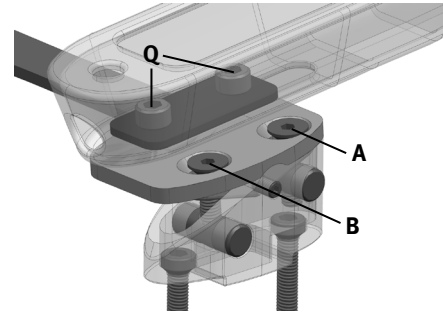
6. Combine bolt (B) and bolt (C) with the inner fixing plate, and mount it inside the extension bar as shown in the picture.
7. Pass the assembly through the angle spacer cover and secure it with the barrel nut.
8. Using a torque wrench, tighten bolt (B) to 5 Nm and check the angle of the extension bar.
9. If angle adjustment is needed, loosen and tighten bolts (B) and (C) to achieve the desired angle.

5.2 How to set armrest angle spacer



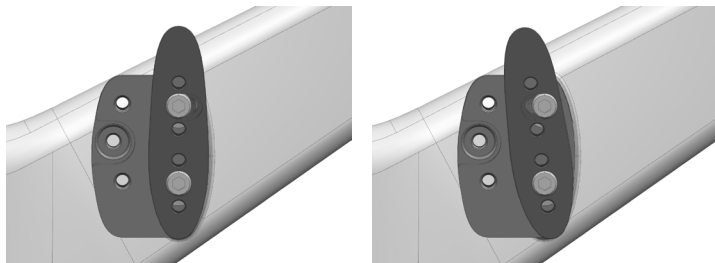
Please adjust the armrest angle spacer to ensure there is no interference between the armrest and the extension bar.

5.3 Example / inner setting assembly



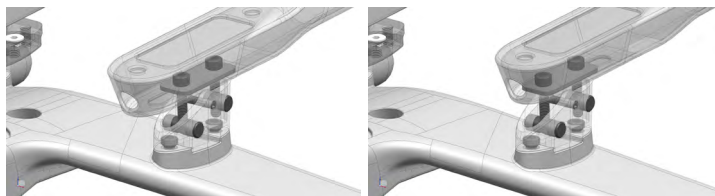
Set the extension bar inward. Use the M5*15mm hex wrench bolt (Part: Q) to secure it. Tighten bolt (A) to 5 Nm with a torque wrench, then check the angle of the extension bar. If angle adjustment is needed, adjust the desired angle by loosening and tightening bolts (A) and (B).

5.4 How to assemble left and right angle adjustment spacers

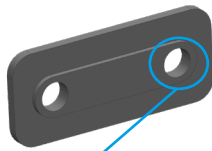


The left and right sides are marked with laser markings. As shown in the figure, the angle can be adjusted from 0° to 8°. Adjust to the desired angle and tighten the bolt. The picture shown is for the right side of the handlebar when seated.

5.5 How to adjust the front and back

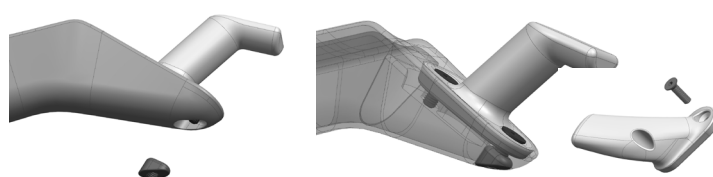


The lower rail of the extension bar allows for front and rear adjustment. Adjust to the desired length and tighten the bolts. You can easily adjust and assemble it by tightening slightly. At this time, align the groove of the inner fixing plate with the hole in the extension bar.



This is the floor. Carbon paste helps secure rails.

5.6 HOW TO ADJUST A GRIP



Insert the extension bar end fixing nut (Part: G) into the bottom front of the extension bar and fasten it with the head cap screw (M5*12mm) (Part: C). We recommend a maximum torque of 4 Nm.

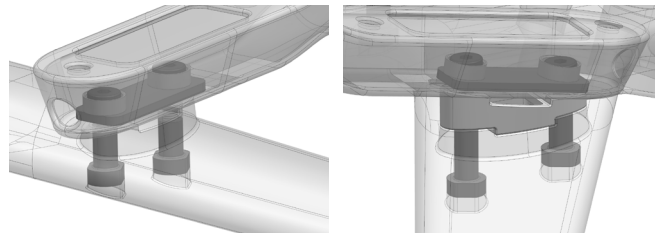


Warning!

Be sure to tighten all parts and components to the recommended torque. Overtightening can damage the shape or integrity of the hardware or components. If not tightened sufficiently, parts may come loose or detach. In both cases, there is a risk of damage to the bike and a serious accident for the rider.

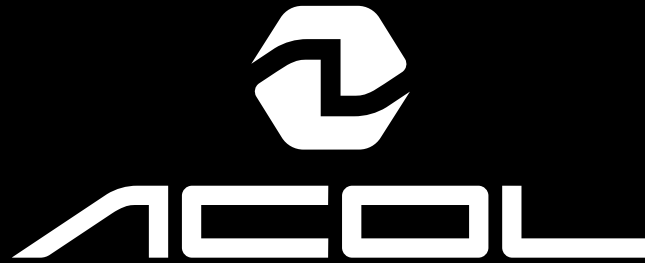
Horn Grip lower angle front screw uses an M5*15mm hex wrench bolt.

5.7 Direct assembly way (optional parts)



Optional parts are combined with the base bar without using adjustable angular spacers. When using a 10° angle spacer, use a sleeve nut with a 10mm high front.

PARTS	CODE	QTY
OPTION INNER FIXING PLATE		2
OPTION ROUND WASHER		4
OPTION HEX WRENCH TITAN BOLT		4



acol.bike